



Thursday, March 12, 2020 | Metro Detroit

Welcome!

The presentation will begin shortly

If your badge was not scanned at the door, please use the self check-in feature in the session details in the Schedule.

A screenshot of a mobile application interface showing session details for "Track 1". The top section is a dark grey header with the text "Track 1", a calendar icon followed by "Thur March 12, 10:30am - 11:15am", and a location pin icon followed by "Salon C". Below this is a white card with five icons: a bookmark icon labeled "Bookmark", a pencil icon labeled "Notes", a star icon labeled "Feedback", a blue checkmark in a circle labeled "Scanned", and a location pin icon labeled "Show Map". A black arrow points upwards to the "Scanned" icon. Below the white card is a red button with white text that reads "Data & Analytics Use Cases". At the bottom, there is a section titled "About" with the text "This session reviews our in-progress corporate".

Hosted by:





DELIVERING POWER

THAT MOVES THE WORLD.

About AAM



Global tier 1 automotive supplier
Headquartered in Detroit, Michigan

\$7.27B 2018 SALES

22,000+ ASSOCIATES

700+ CUSTOMERS

17 COUNTRIES

80 APPROX. LOCATIONS

60+ MANUFACTURING FACILITIES

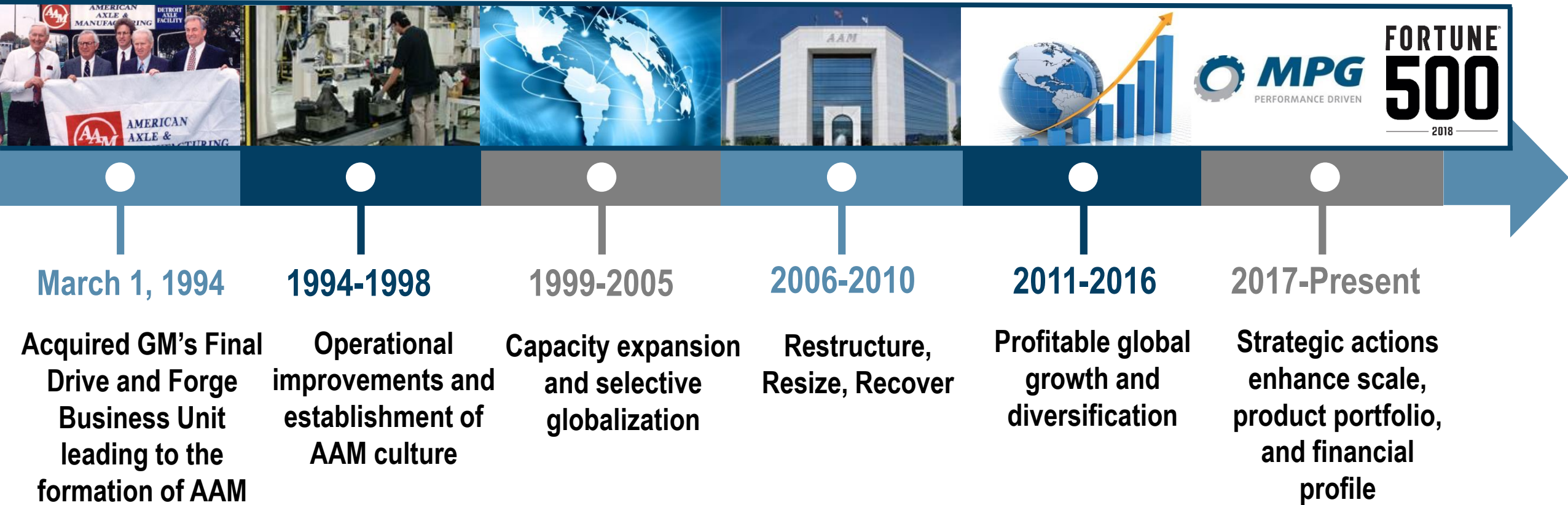
16 ENGINEERING CENTERS



History Timeline



For over 25 years, AAM has been Delivering **POWER.**



Company Overview

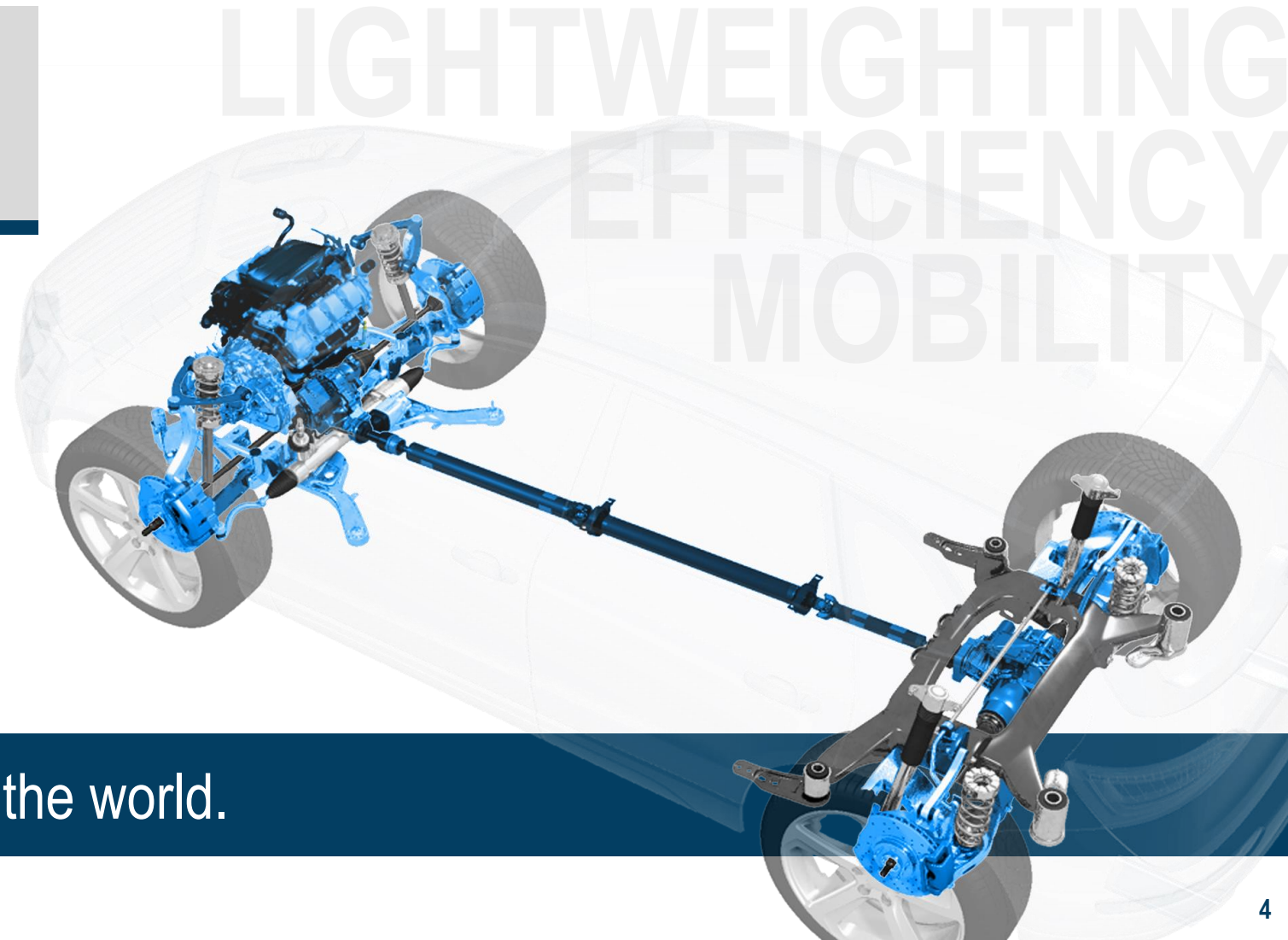


COMPREHENSIVE SOLUTIONS
from engine to driveline.

Focus on

- **Quality,**
- **Operational Excellence**
- **Technology leadership**

AAM delivers **POWER** that moves the world.



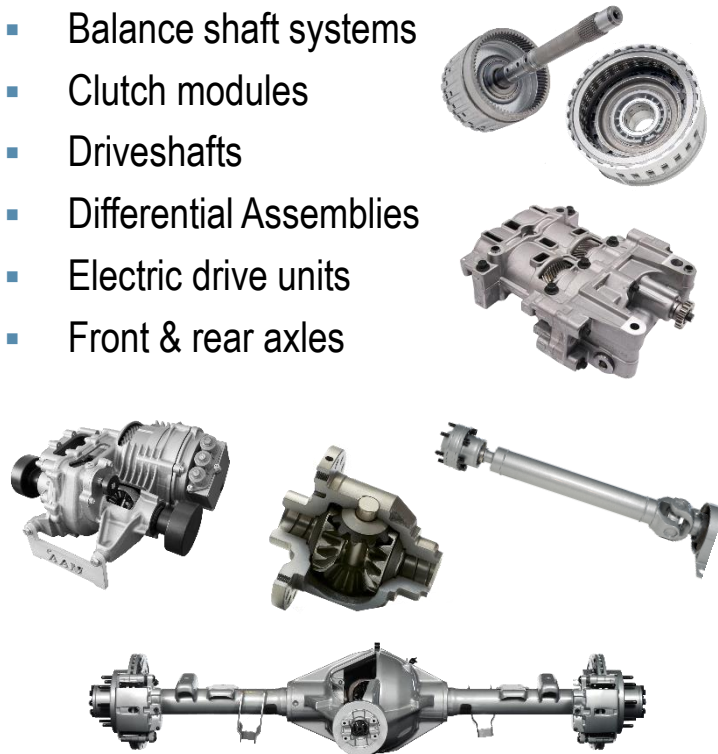
Diverse Product Portfolio



Product portfolio that serves the global automotive market

DRIVELINE | ≈ \$4.9B

- Balance shaft systems
- Clutch modules
- Driveshafts
- Differential Assemblies
- Electric drive units
- Front & rear axles



METAL FORMING | ≈ \$2.0B

- Axle / transmission shafts
- Connecting rods
- Differential gears
- Ring gears & pinions
- Suspension components
- Variable valve timing products



Digital & Analytics Department Goals



- **Visionary**
 - Stay on top of emerging technologies to adjust technology foundation over time
- **Speed**
 - Immediate response to business partner needs.
- **Alignment**
 - Tight alignment between business and technology roadmaps
- **Automation**
 - Reduce manual effort to automate solution for business partners and for IT
- **Visibility for Better Decision Making**
 - Do more to drive insights from of AAM's data for improved decision-making

History Timeline

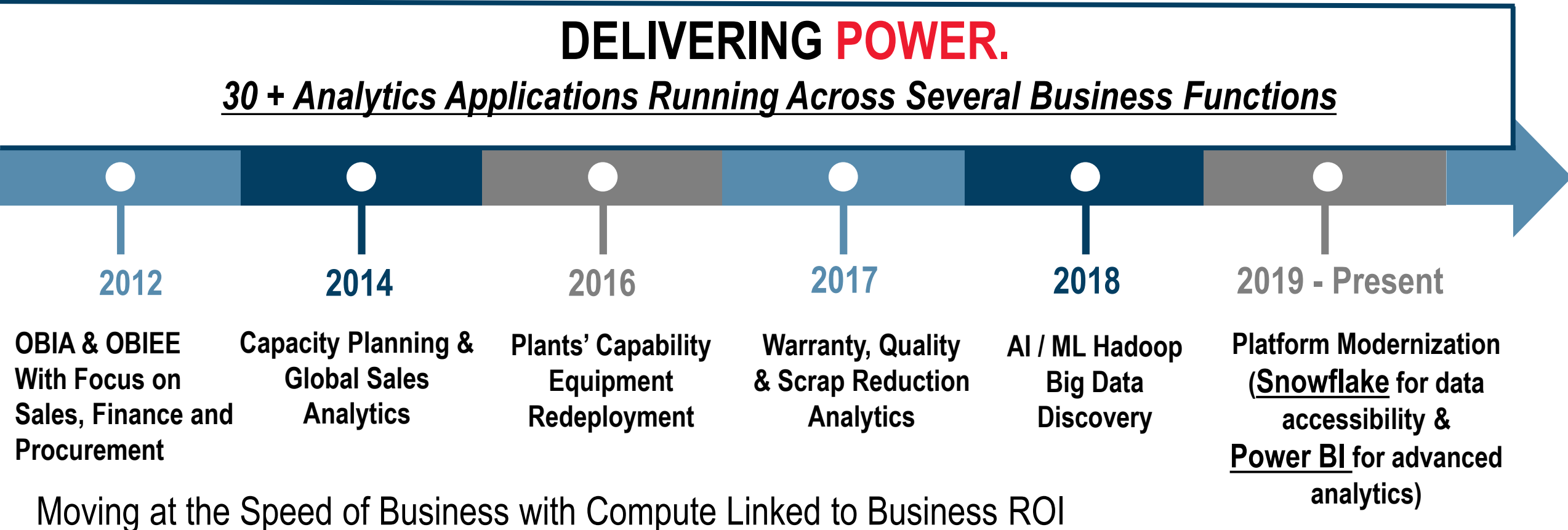


AAM's Digital & Analytics Journey

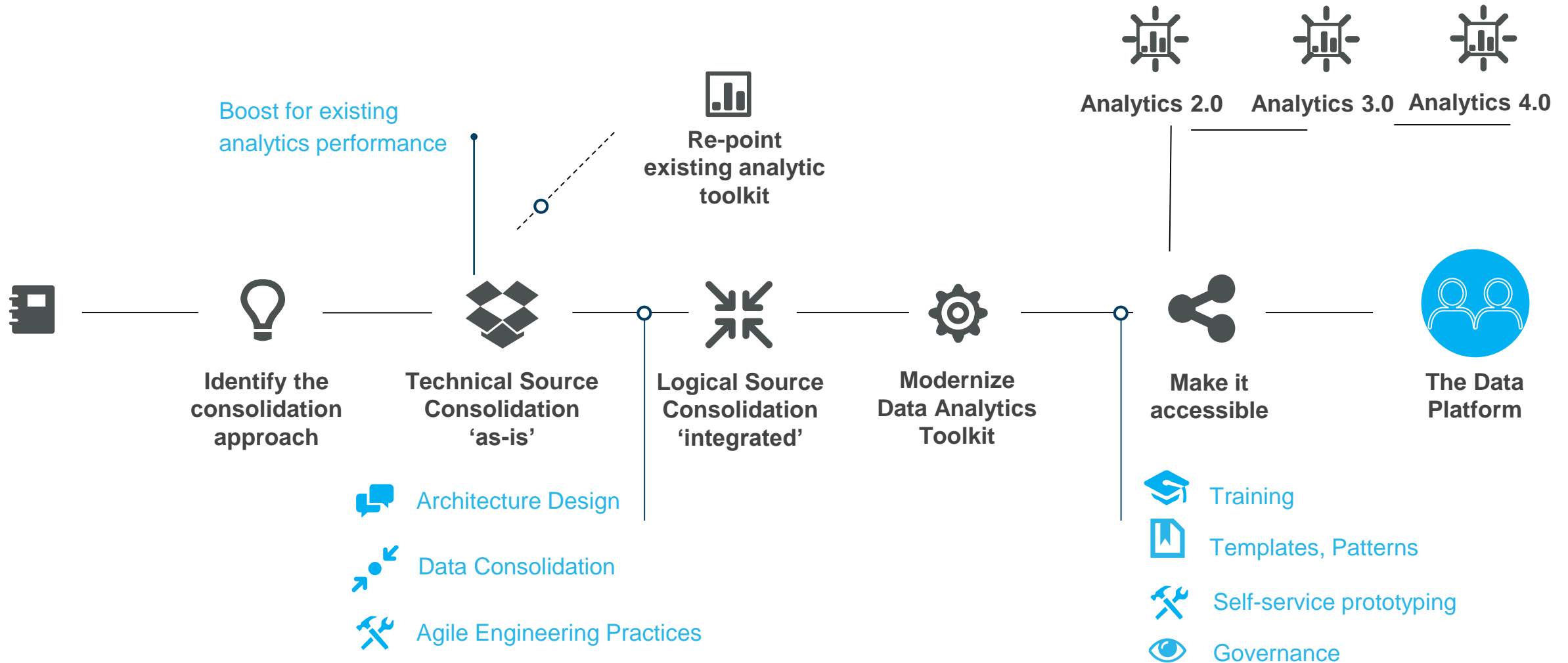
DELIVERING POWER

DELIVERING POWER.

30 + Analytics Applications Running Across Several Business Functions



Modernize Platform & Make Data Accessible





■ **Cloud Data Platform - Snowflake**

- Streamlined Data Engineering
- Faster, Easier Data Preparation, Ingestion, and Computation for Data Science
- Superior Performance - Makes Fast Insights Possible on Large Amounts of Data
- SAAS Platform = Automation vs. Manual Administration from IT
- Direct Alignment of Platform Costs to Business Projects
- Support Digital Platform Goals (Public Cloud) & Cross-Cloud Provides Future Flexibility







Thursday, March 12, 2020 | Metro Detroit




Thank you for attending!




We value your feedback!
Please rate your speaker in
the session details in the
Schedule.

Track 1

 Thur March 12, 10:30am - 11:15am

 Salon C

 Bookmark  Notes  Feedback

 Scanned  Show Map 

[Data & Analytics Use Cases](#)

About
This session reviews our in-progress corporate

Hosted by:

